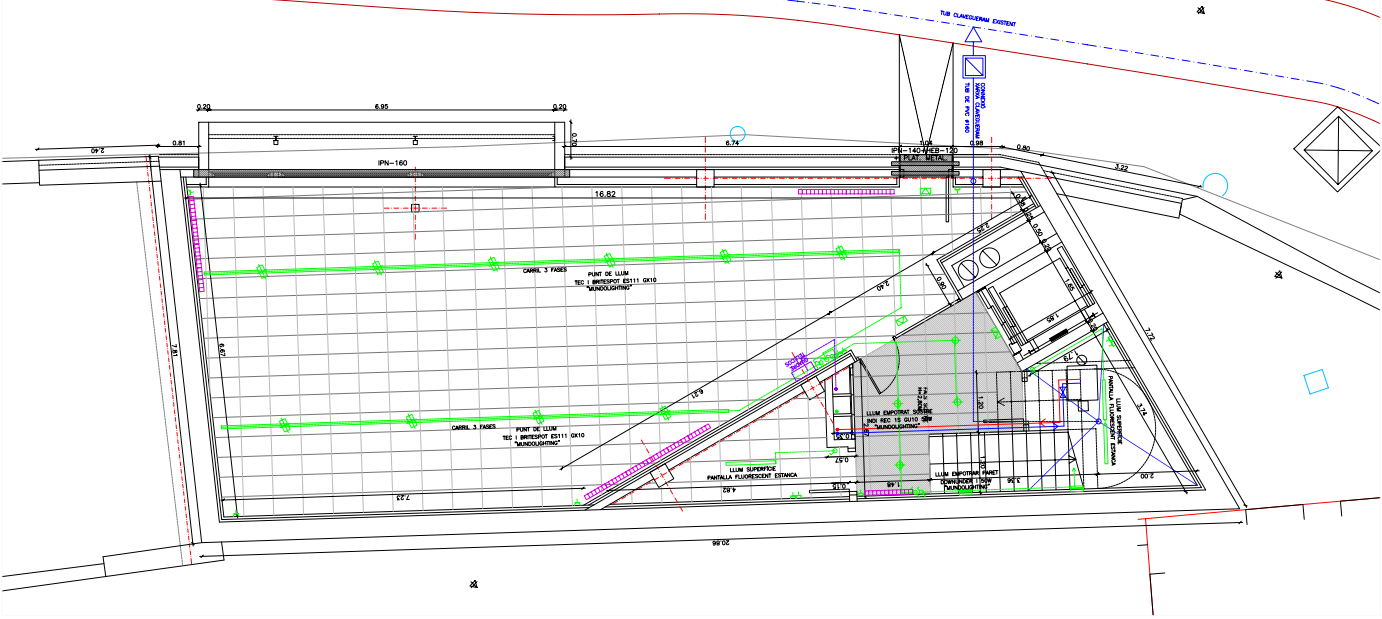
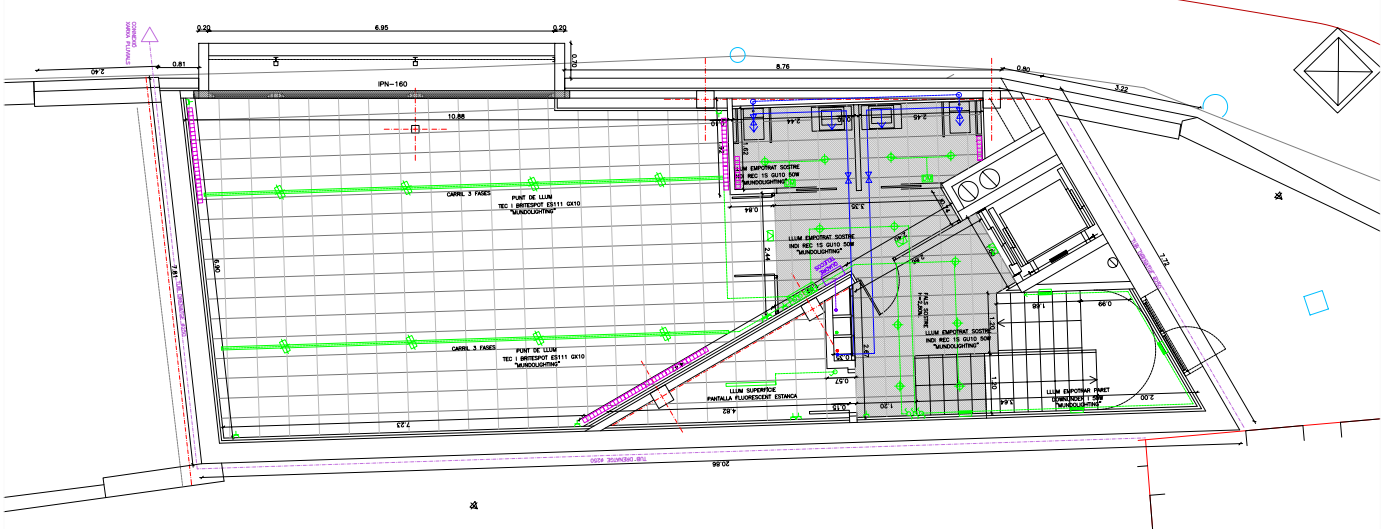


PLANTA S2



PLANTA S1



LEGENDA DE SIMBOLES	
	CANAL 3 FASES
	PUNT DE LLUM
	LLUM
	INTERRUPTOR
	PREMUTADOR
	TRANSFORMADOR
	CAIXA DE JUNTA
	TUBERIA
	CABLE
	BARRA
	PLACA DE TERMINALS
	TERRA
	ALARMA D'INCENDI
	BELLA D'INCENDI
	PLACA DE CONTROL D'ALARMA D'INCENDI
	DETECTOR D'INCENDI
	PUNT DE LLAMADA MANUAL D'INCENDI
	SONORIFICADOR D'INCENDI
	PLACA DE CONTROL D'ALARMA D'INCENDI AMB SONORIFICADOR
	PLACA DE CONTROL D'ALARMA D'INCENDI AMB BELLA
	PLACA DE CONTROL D'ALARMA D'INCENDI AMB BELLA I SONORIFICADOR
	PLACA DE CONTROL D'ALARMA D'INCENDI AMB BELLA, SONORIFICADOR I PUNT DE LLAMADA MANUAL
	PLACA DE CONTROL D'ALARMA D'INCENDI AMB BELLA, SONORIFICADOR, PUNT DE LLAMADA MANUAL I DETECTOR
	PLACA DE CONTROL D'ALARMA D'INCENDI AMB BELLA, SONORIFICADOR, PUNT DE LLAMADA MANUAL, DETECTOR I SONORIFICADOR
	PLACA DE CONTROL D'ALARMA D'INCENDI AMB BELLA, SONORIFICADOR, PUNT DE LLAMADA MANUAL, DETECTOR, SONORIFICADOR I BELLA
	PLACA DE CONTROL D'ALARMA D'INCENDI AMB BELLA, SONORIFICADOR, PUNT DE LLAMADA MANUAL, DETECTOR, SONORIFICADOR I BELLA I SONORIFICADOR
	PLACA DE CONTROL D'ALARMA D'INCENDI AMB BELLA, SONORIFICADOR, PUNT DE LLAMADA MANUAL, DETECTOR, SONORIFICADOR I BELLA I SONORIFICADOR I BELLA I SONORIFICADOR

PROJECTE EXECUTIU
CENTRE D'INTERPRETACIO SERRA CAVALLERA

PROPIETOR: AJUNTAMENT PARONIS
 SITUACIO: C/ DE LA VALL, 50V
 PARONIS
 DATA: MARÇ 2011
 ESCALA: 1:100
 REF.: P/001/17409
 ARQUITECTE: XABER SARDRI I ROQUE

SARDRI
 ESTUDI D'ARQUITECTURA

C/ PARONIS, 50, 17409 PARONIS
 T. 972 70 07 89 Fax. 972 71 46 25
 Email: xro@sdri.com

Llegenda mecanismes

Mecanisme interruptor controlador (0aw/250v, sèrie Galea ref.775906. Tapa sèrie Galea per mecanisme simple color alumini ref.771310 Marc. 1 element horitzontal 91x83 color alumini ref.771301

Mecanisme interruptor bipolar estanc IP55 de Plexo ref.091605

Mecanisme commutador estanc IP55 de Plexo ref.091605

Mecanisme interruptor controlador (0aw/250v, sèrie Galea ref.775906. Tapa sèrie Galea per mecanisme simple color alumini ref.771310 Marc. 3 element horitzontal 91x83 color alumini ref.771303

Mecanisme toma 2P+T lateral, bombes de càrrega, sèrie Galea ref.775921 Tapa Galea per toma 2P+T lateral color alumini ref.771320 Marc. 1 element horitzontal 91x83 color alumini ref.771321

Mecanisme presa 2P+T, estanc per exterior Plexo ref.090341

Mecanisme de detector de moviment amb sensor circular de detecció 360° a soure de Logrand ref.093940

Calca d'impulsor de 4 mòduls dobles CINA marca Simon. Caixa de 54x45, marc ref. SHWZL emissor SH400. 4 endolls. 3 preses de xarxa. 1 TV-Sat.

Quadre general de comandament i protecció

Subquadre sala calderes

Extugamans

Calca General Protecció i Mesura

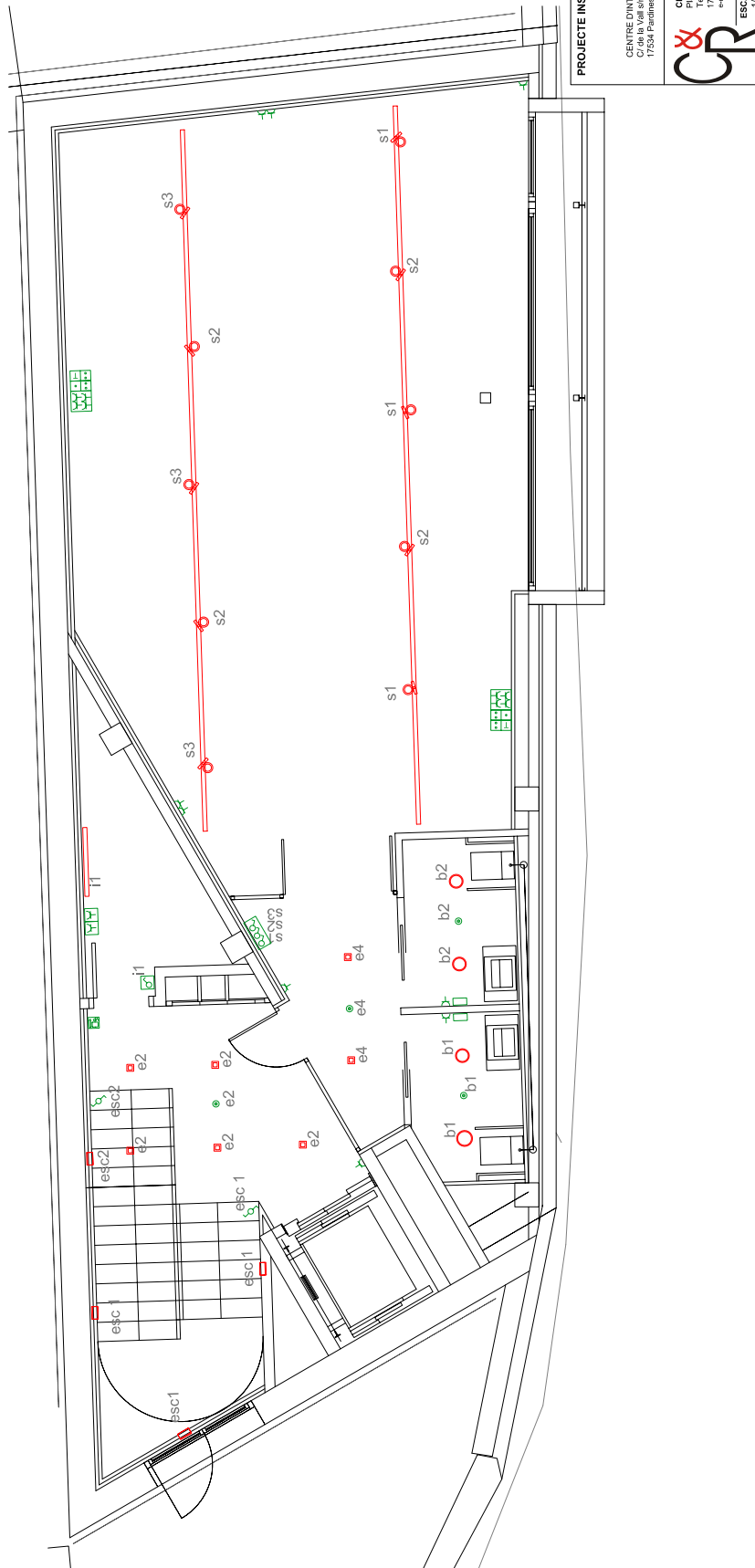
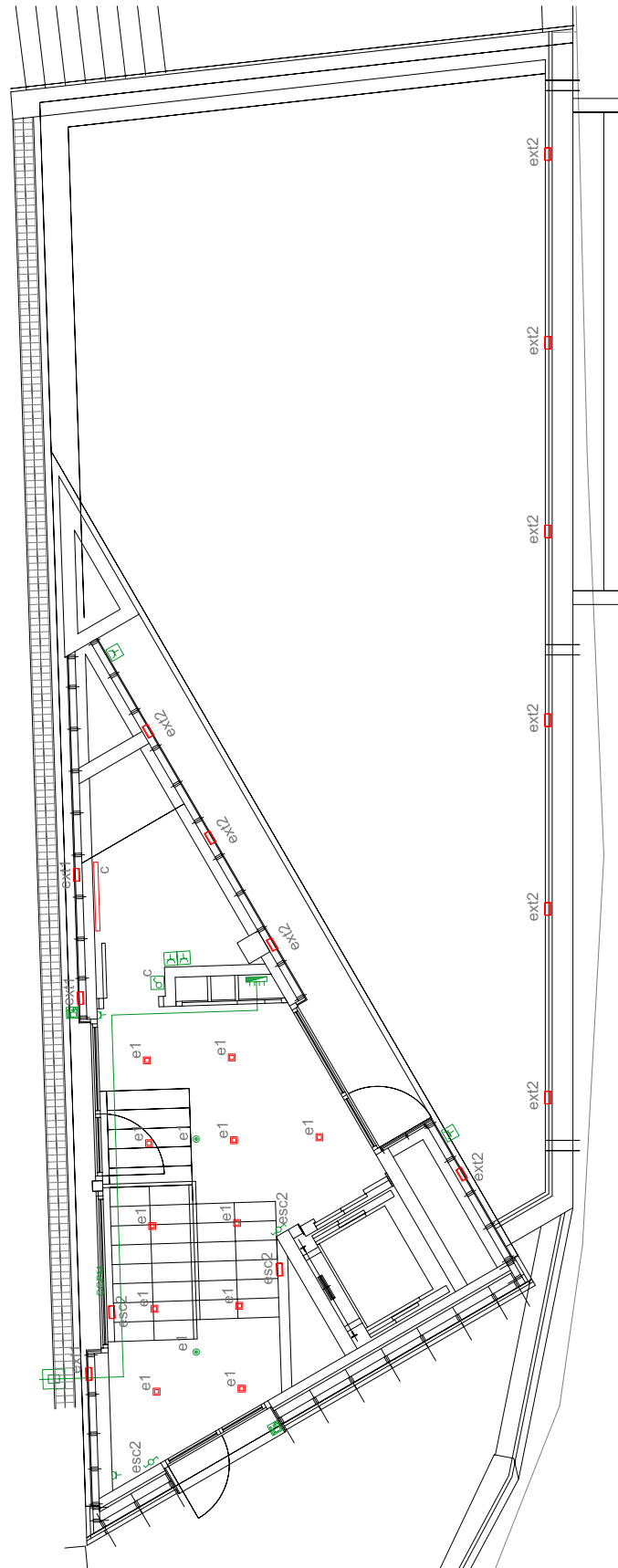
Relació enceses planta baixa

planta baixa

entrada e1
 escala esc2
 terrat e2
 exterior ext1
 sala dipòsit c

planta soterrani -1
 vestíbul s1, s2, s3
 escala esc1
 sala instal·lacions i1
 serveis b1, b2
 vestíbul banys e4

planta soterrani -2
 sala s1
 vestíbul s2
 sala instal·lacions i3
 sala calderes i2
 exterior sortida ext3



PROJECTE INSTAL·LACIONS

CENTRE D'INTERPRETACIÓ SERRA CAVALLERA
 C/ de la Vall 8/A
 17534 Parletines

CLUSELLS & ROCA ENGINEERS, SL
 C/ de la Vall 8/A
 17500 RIPOLL
 Tel. 972702480 Fax 972703368
 e-mail: clusells@terra.es



PROJECTAT: Jordi Clusells
 Col·legiat núm.: 11.935

PLANOCL Mecanismes 1

DATA Abril 2011

ARXIU nom.plano 201

ARXIU nom.plano 201

ARXIU nom.plano 201

1/50

Fanalls horitzontal canalitzable model EIRQduct CF 31 de la marca Clivex, o similar. Sistema de quatre tubs i tres velocitats amb les característiques següents:

Dimensions llarg (mm)	1400
anys (mm)	500
alt (mm)	322
Potència frigorífica (Kw)	12.7
Potència calorífica (Kw)	14.4
Pressió sonora nominal (dB)	75
Pressió sonora nominal max dB(A)	55
max. pressió estàtica util Pa	140

Concepció de distribució d'aire, col·lectors de dissipació, formada per tub multicapa de polietilè resistent a la temperatura de Ø mínim segons plànol col·locatsuperficial

- Impulsió circuit calefacció per cel·les
- retorn circuit calefacció per cel·les
- Impulsió circuit calefacció per paviment
- retorn circuit calefacció per paviment

Radiador d'alumini injectat, emissió calorífica sèrie, per una superfície de radiador de 1,5m x 0,6m, amb emissors de 575 mm d'altura, amb frontal pla, per instal·lació de calefacció centralitzada per aigua, amb sistema bitub.

Recuperador de calor aire-aire, amb intercambiador de flux creuat, model RS400P de Sodeca o similar amb les característiques següents:

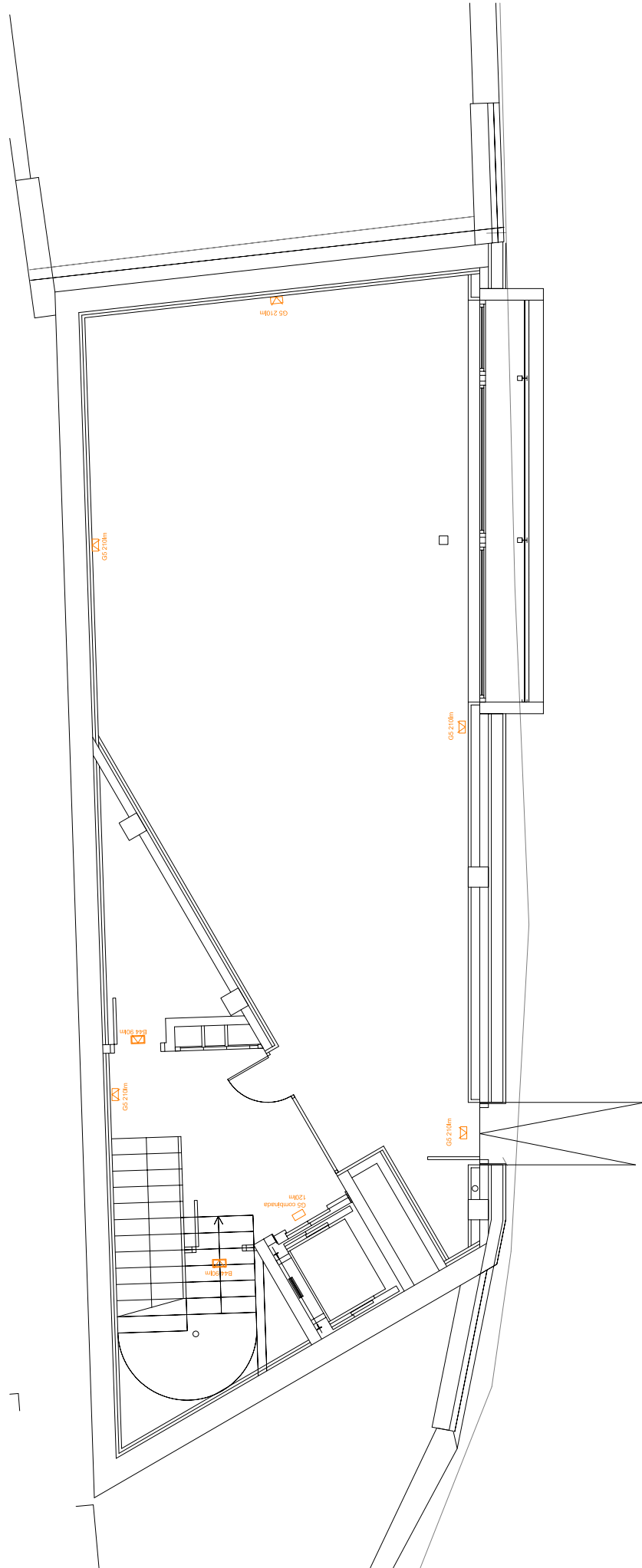
capacitat màxim	450 m ³ /h
eficiència sensible	75%
dimensions	970x615x264 mm
nivell de pressió sonora	de 44dB(A)

Doble paret insonoritzada amb 50mm d'aïllament acústic d'alta absorció Sensor de temperatura d'entrada i sortida




- Conducció d'impulsió autoportant per la climatització.
- Conducció d'extracció autoportant per la distribució d'aire en climatització.

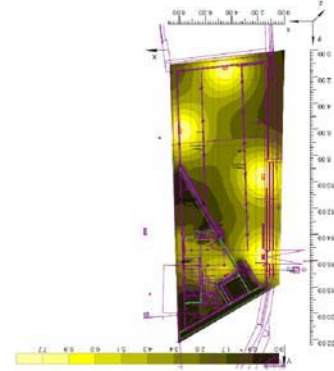
Conducció formata per panells rígids d'alta densitat de llana de vidre Climaver Plus R ISOVER, o similar segons LINEEN 13162, revestit per ambdues cares per alumini (exterior: alumini-malla de fibra de vidre, interior: alumini-malla de fibra de vidre) amb muntatge complet interior del conducte de 26mm de gruix.

Resistència tèrmica 0.75 (m²·K)/W
Conductivitat tèrmica 0.032 W/(m·K)
Euroclasse Bg(d0) de resistència al foc, amb codi de designació Bg(d0) s0, a0, s1, s2, s3, s4, s5, s6, s7, s8, s9, s10, s11, s12, s13, s14, s15, s16, s17, s18, s19, s20, s21, s22, s23, s24, s25, s26, s27, s28, s29, s30, s31, s32, s33, s34, s35, s36, s37, s38, s39, s40, s41, s42, s43, s44, s45, s46, s47, s48, s49, s50, s51, s52, s53, s54, s55, s56, s57, s58, s59, s60, s61, s62, s63, s64, s65, s66, s67, s68, s69, s70, s71, s72, s73, s74, s75, s76, s77, s78, s79, s80, s81, s82, s83, s84, s85, s86, s87, s88, s89, s90, s91, s92, s93, s94, s95, s96, s97, s98, s99, s100, s101, s102, s103, s104, s105, s106, s107, s108, s109, s110, s111, s112, s113, s114, s115, s116, s117, s118, s119, s120, s121, s122, s123, s124, s125, s126, s127, s128, s129, s130, s131, s132, s133, s134, s135, s136, s137, s138, s139, s140, s141, s142, s143, s144, s145, s146, s147, s148, s149, s150, s151, s152, s153, s154, s155, s156, s157, s158, s159, s160, s161, s162, s163, s164, s165, s166, s167, s168, s169, s170, s171, s172, s173, s174, s175, s176, s177, s178, s179, s180, s181, s182, s183, s184, s185, s186, s187, s188, s189, s190, s191, s192, s193, s194, s195, s196, s197, s198, s199, s200, s201, s202, s203, s204, s205, s206, s207, s208, s209, s210, s211, s212, s213, s214, s215, s216, s217, s218, s219, s220, s221, s222, s223, s224, s225, s226, s227, s228, s229, s230, s231, s232, s233, s234, s235, s236, s237, s238, s239, s240, s241, s242, s243, s244, s245, s246, s247, s248, s249, s250, s251, s252, s253, s254, s255, s256, s257, s258, s259, s260, s261, s262, s263, s264, s265, s266, s267, s268, s269, s270, s271, s272, s273, s274, s275, s276, s277, s278, s279, s280, s281, s282, s283, s284, s285, s286, s287, s288, s289, s290, s291, s292, s293, s294, s295, s296, s297, s298, s299, s300, s301, s302, s303, s304, s305, s306, s307, s308, s309, s310, s311, s312, s313, s314, s315, s316, s317, s318, s319, s320, s321, s322, s323, s324, s325, s326, s327, s328, s329, s330, s331, s332, s333, s334, s335, s336, s337, s338, s339, s340, s341, s342, s343, s344, s345, s346, s347, s348, s349, s350, s351, s352, s353, s354, s355, s356, s357, s358, s359, s360, s361, s362, s363, s364, s365, s366, s367, s368, s369, s370, s371, s372, s373, s374, s375, s376, s377, s378, s379, s380, s381, s382, s383, s384, s385, s386, s387, s388, s389, s390, s391, s392, s393, s394, s395, s396, s397, s398, s399, s400, s401, s402, s403, s404, s405, s406, s407, s408, s409, s410, s411, s412, s413, s414, s415, s416, s417, s418, s419, s420, s421, s422, s423, s424, s425, s426, s427, s428, s429, s430, s431, s432, s433, s434, s435, s436, s437, s438, s439, s440, s441, s442, s443, s444, s445, s446, s447, s448, s449, s450, s451, s452, s453, s454, s455, s456, s457, s458, s459, s460, s461, s462, s463, s464, s465, s466, s467, s468, s469, s470, s471, s472, s473, s474, s475, s476, s477, s478, s479, s480, s481, s482, s483, s484, s485, s486, s487, s488, s489, s490, s491, s492, s493, s494, s495, s496, s497, s498, s499, s500, s501, s502, s503, s504, s505, s506, s507, s508, s509, s510, s511, s512, s513, s514, s515, s516, s517, s518, s519, s520, s521, s522, s523, s524, s525, s526, s527, s528, s529, s530, s531, s532, s533, s534, s535, s536, s537, s538, s539, s540, s541, s542, s543, s544, s545, s546, s547, s548, s549, s550, s551, s552, s553, s554, s555, s556, s557, s558, s559, s560, s561, s562, s563, s564, s565, s566, s567, s568, s569, s570, s571, s572, s573, s574, s575, s576, s577, s578, s579, s580, s581, s582, s583, s584, s585, s586, s587, s588, s589, s590, s591, s592, s593, s594, s595, s596, s597, s598, s599, s600, s601, s602, s603, s604, s605, s606, s607, s608, s609, s610, s611, s612, s613, s614, s615, s616, s617, s618, s619, s620, s621, s622, s623, s624, s625, s626, s627, s628, s629, s630, s631, s632, s633, s634, s635, s636, s637, s638, s639, s640, s641, s642, s643, s644, s645, s646, s647, s648, s649, s650, s651, s652, s653, s654, s655, s656, s657, s658, s659, s660, s661, s662, s663, s664, s665, s666, s667, s668, s669, s670, s671, s672, s673, s674, s675, s676, s677, s678, s679, s680, s681, s682, s683, s684, s685, s686, s687, s688, s689, s690, s691, s692, s693, s694, s695, s696, s697, s698, s699, s700, s701, s702, s703, s704, s705, s706, s707, s708, s709, s710, s711, s712, s713, s714, s715, s716, s717, s718, s719, s720, s721, s722, s723, s724, s725, s726, s727, s728, s729, s730, s731, s732, s733, s734, s735, s736, s737, s738, s739, s740, s741, s742, s743, s744, s745, s746, s747, s748, s749, s750, s751, s752, s753, s754, s755, s756, s757, s758, s759, s760, s761, s762, s763, s764, s765, s766, s767, s768, s769, s770, s771, s772, s773, s774, s775, s776, s777, s778, s779, s780, s781, s782, s783, s784, s785, s786, s787, s788, s789, s790, s791, s792, s793, s794, s795, s796, s797, s798, s799, s800, s801, s802, s803, s804, s805, s806, s807, s808, s809, s810, s811, s812, s813, s814, s815, s816, s817, s818, s819, s820, s821, s822, s823, s824, s825, s826, s827, s828, s829, s830, s831, s832, s833, s834, s835, s836, s837, s838, s839, s840, s841, s842, s843, s844, s845, s846, s847, s848, s849, s850, s851, s852, s853, s854, s855, s856, s857, s858, s859, s860, s861, s862, s863, s864, s865, s866, s867, s868, s869, s870, s871, s872, s873, s874, s875, s876, s877, s878, s879, s880, s881, s882, s883, s884, s885, s886, s887, s888, s889, s890, s891, s892, s893, s894, s895, s896, s897, s898, s899, s900, s901, s902, s903, s904, s905, s906, s907, s908, s909, s910, s911, s912, s913, s914, s915, s916, s917, s918, s919, s920, s921, s922, s923, s924, s925, s926, s927, s928, s929, s930, s931, s932, s933, s934, s935, s936, s937, s938, s939, s940, s941, s942, s943, s944, s945, s946, s947, s948, s949, s950, s951, s952, s953, s954, s955, s956, s957, s958, s959, s960, s961, s962, s963, s964, s965, s966, s967, s968, s969, s970, s971, s972, s973, s974, s975, s976, s977, s978, s979, s980, s981, s982, s983, s984, s985, s986, s987, s988, s989, s990, s991, s992, s993, s994, s995, s996, s997, s998, s999, s1000, s1001, s1002, s1003, s1004, s1005, s1006, s1007, s1008, s1009, s1010, s1011, s1012, s1013, s1014, s1015, s1016, s1017, s1018, s1019, s1020, s1021, s1022, s1023, s1024, s1025, s1026, s1027, s1028, s1029, s1030, s1031, s1032, s1033, s1034, s1035, s1036, s1037, s1038, s1039, s1040, s1041, s1042, s1043, s1044, s1045, s1046, s1047, s1048, s1049, s1050, s1051, s1052, s1053, s1054, s1055, s1056, s1057, s1058, s1059, s1060, s1061, s1062, s1063, s1064, s1065, s1066, s1067, s1068, s1069, s1070, s1071, s1072, s1073, s1074, s1075, s1076, s1077, s1078, s1079, s1080, s1081, s1082, s1083, s1084, s1085, s1086, s1087, s1088, s1089, s1090, s1091, s1092, s1093, s1094, s1095, s1096, s1097, s1098, s1099, s1100, s1101, s1102, s1103, s1104, s1105, s1106, s1107, s1108, s1109, s1110, s1111, s1112, s1113, s1114, s1115, s1116, s1117, s1118, s1119, s1120, s1121, s1122, s1123, s1124, s1125, s1126, s1127, s1128, s1129, s1130, s1131, s1132, s1133, s1134, s1135, s1136, s1137, s1138, s1139, s1140, s1141, s1142, s1143, s1144, s1145, s1146, s1147, s1148, s1149, s1150, s1151, s1152, s1153, s1154, s1155, s1156, s1157, s1158, s1159, s1160, s1161, s1162, s1163, s1164, s1165, s1166, s1167, s1168, s1169, s1170, s1171, s1172, s1173, s1174, s1175, s1176, s1177, s1178, s1179, s1180, s1181, s1182, s1183, s1184, s1185, s1186, s1187, s1188, s1189, s1190, s1191, s1192, s1193, s1194, s1195, s1196, s1197, s1198, s1199, s1200, s1201, s1202, s1203, s1204, s1205, s1206, s1207, s1208, s1209, s1210, s1211, s1212, s1213, s1214, s1215, s1216, s1217, s1218, s1219, s1220, s1221, s1222, s1223, s1224, s1225, s1226, s1227, s1228, s1229, s1230, s1231, s1232, s1233, s1234, s1235, s1236, s1237, s1238, s1239, s1240, s1241, s1242, s1243, s1244, s1245, s1246, s1247, s1248, s1249, s1250, s1251, s1252, s1253, s1254, s1255, s1256, s1257, s1258, s1259, s1260, s1261, s1262, s1263, s1264, s1265, s1266, s1267, s1268, s1269, s1270, s1271, s1272, s1273, s1274, s1275, s1276, s1277, s1278, s1279, s1280, s1281, s1282, s1283, s1284, s1285, s1286, s1287, s1288, s1289, s1290, s1291, s1292, s1293, s1294, s1295, s1296, s1297, s1298, s1299, s1300, s1301, s1302, s1303, s1304, s1305, s1306, s1307, s1308, s1309, s1310, s1311, s1312, s1313, s1314, s1315, s1316, s1317, s1318, s1319, s1320, s1321, s1322, s1323, s1324, s1325, s1326, s1327, s1328, s1329, s1330, s1331, s1332, s1333, s1334, s1335, s1336, s1337, s1338, s1339, s1340, s1341, s1342, s1343, s1344, s1345, s1346, s1347, s1348, s1349, s1350, s1351, s1352, s1353, s1354, s1355, s1356, s1357, s1358, s1359, s1360, s1361, s1362, s1363, s1364, s1365, s1366, s1367, s1368, s1369, s1370, s1371, s1372, s1373, s1374, s1375, s1376, s1377, s1378, s1379, s1380, s1381, s1382, s1383, s1384, s1385, s1386, s1387, s1388, s1389, s1390, s1391, s1392, s1393, s1394, s1395, s1396, s1397, s1398, s1399, s1400, s1401, s1402, s1403, s1404, s1405, s1406, s1407, s1408, s1409, s1410, s1411, s1412, s1413, s1414, s1415, s1416, s1417, s1418, s1419, s1420, s1421, s1422, s1423, s1424, s1425, s1426, s1427, s1428, s1429, s1430, s1431, s1432, s1433, s1434, s1435, s1436, s1437, s1438, s1439, s1440, s1441, s1442, s1443, s1444, s1445, s1446, s1447, s1448, s1449, s1450, s1451, s1452, s1453, s1454, s1455, s1456, s1457, s1458, s1459, s1460, s1461, s1462, s1463, s1464, s1465, s1466, s1467, s1468, s1469, s1470, s1471, s1472, s1473, s1474, s1475, s1476, s1477, s1478, s1479, s1480, s1481, s1482, s1483, s1484, s1485, s1486, s1487, s1488, s1489, s1490, s1491, s1492, s1493, s1494, s1495, s1496, s1497, s1498, s1499, s1500, s1501, s1502, s1503, s1504, s1505, s1506, s1507, s1508, s1509, s1510, s1511, s1512, s1513, s1514, s1515, s1516, s1517, s1518, s1519, s1520, s1521, s1522, s1523, s1524, s1525, s1526, s1527, s1528, s1529, s1530, s1531, s1532, s1533, s1534, s1535, s1536, s1537, s1538, s1539, s1540, s1541, s1542, s1543, s1544, s1545, s1546, s1547, s1548, s1549, s1550, s1551, s1552, s1553, s1554, s1555, s1556, s1557, s1558, s1559, s1560, s1561, s1562, s1563, s1564, s1565, s1566, s1567, s1568, s1569, s1570, s1571, s1572, s1573, s1574, s1575, s1576, s1577, s1578, s1579, s1580, s1581, s1582, s1583, s1584, s1585, s1586, s1587, s1588, s1589, s1590, s1591, s1592, s1593, s1594, s1595, s1596, s1597, s1598, s1599, s1600, s1601, s1602, s1603, s1604, s1605, s1606, s1607, s1608, s1609, s1610, s1611, s1612, s1613, s1614, s1615, s1616, s1617, s1618, s1619, s1620, s1621, s1622, s1623, s1624, s1625, s1626, s1627, s1628, s1629, s1630, s1631, s1632, s1633, s1634, s1635, s1636, s1637, s1638, s1639, s1640, s1641, s1642, s1643, s1644, s1645, s1646, s1647, s1648, s1649, s1650, s1651, s1652, s1653, s1654, s1655, s1656, s1657, s1658, s1659, s1660, s1661, s1662, s1663, s1664, s1665, s1666, s1667, s1668, s1669, s1670, s1671, s1672, s1673, s1674, s1675, s1676, s1677, s1678, s1679, s1680, s1681, s1682, s1683, s1684, s1685, s1686, s1687, s1688, s1689, s1690, s1691, s1692, s1693, s1694, s1695, s1696, s1697, s1698, s1699, s1700, s1701, s1702, s1703, s1704, s1705, s1706, s1707, s1708, s1709, s1710, s1711, s1712, s1713, s1714, s1715, s1716, s1717, s1718, s1719, s1720, s1721, s1722, s1723, s1724, s1725, s1726, s1727, s1728, s1729, s1730, s1731, s1732, s1733, s1734, s1735, s1736, s1737, s1738, s1739, s1740, s1741, s1742, s1743, s1744, s1745, s1746, s1747, s1748, s1749, s1750, s1751, s1752, s1753, s1754, s1755, s1756, s1757, s1758, s1759, s1760, s1761, s1762, s1763, s1764, s1765, s1766, s1767, s1768, s1769, s1770, s1771, s1772, s1773, s1774, s1775, s1776, s1777, s1778, s1779, s1780, s1781, s1782, s1783, s1784, s1785, s1786, s1787, s1788, s1789, s1790, s1791, s1792, s1793, s1794, s1795, s1796, s1797, s1798, s1799, s1800, s1801, s1802, s1803, s1804, s1805, s1806, s1807, s1808, s1809, s1810, s1811, s1812, s1813, s1814, s1815, s1816, s1817, s1818, s1819, s1820, s1821, s1822, s1823, s1824, s1825, s1826, s1827, s1828, s1829, s1830, s1831, s1832, s1833, s1834, s1835, s1836, s1837, s1838, s1839, s1840, s1841, s1842, s1843, s1844, s1845, s1846, s1847, s1848, s1849, s1850, s1851, s1852, s1853, s1854, s1855, s1856, s1857, s1858, s1859, s1860, s1861, s1862, s1863, s1864, s1865, s1866, s1867, s1868, s1869, s1870, s1871, s1872, s1873, s1874, s1875, s1876, s1877, s1878, s1879, s1880, s1881, s1882, s1883, s1884, s1885, s1886, s1887, s1888, s1889, s1890, s1891, s1892, s1893, s1894, s1895, s1896, s1897, s1898, s1899, s1900, s1901, s1902, s1903, s1904, s1905, s1906, s1907, s1908, s1909, s1910, s1911, s1912, s1913, s1914, s1915, s1916, s1917, s1918, s1919, s1920, s1921, s1922, s1923, s1924, s1925, s1926, s1927, s1928, s1929, s1930, s1931, s1932, s1933, s1934, s1935, s1936, s1937, s1938, s1939, s1940, s1941, s1942, s1943, s1944, s1945, s1946, s1947, s1948, s1949, s1950, s1951, s1952, s1953, s1954, s1955, s1956, s1957, s1958, s1959, s1960, s1961, s1962, s1963, s1964, s1965, s1966, s1967, s1968, s1969, s1970, s1971, s1972, s1973, s1974, s1975, s1976, s1977, s1978, s1979, s1980, s1981, s1982, s1983, s1984, s1985, s1986, s1987, s1988, s1989, s1990, s1991, s1992, s1993, s1994, s1995, s1996, s1997, s1998, s1999, s2000, s2001, s2002, s2003, s2004, s2005, s2006, s2007, s2008, s2009, s2010, s2011, s2012, s2013, s2014, s2015, s2016, s2017, s2018, s2019, s2020, s2021, s2022, s2023, s2024, s2025, s2026, s2027, s2028, s2029, s2030, s203



LLEGENDA EMERGENCIES

-  Luminària d'emergència fluorescent tub lineal de 90/2210 lumens, de la marca Legrand model G5 o similar de qualitat contrastada.
-  Luminària d'emergència fluorescent tub lineal de 120 lumens, de la marca Legrand model G5 Combinada o similar de qualitat contrastada.
-  Luminària d'emergència fluorescent tub lineal de 90 lumens, de la marca Legrand model B44, o similar de qualitat contrastada.



PROJECTE INSTAL·LACIONS

CENTRE D'INTERPRETACIÓ SERRA CAVALLERA
C/ de la Vall 8/A
17534 Parçelles

PROJECTAT: Joel Cluells
Col·legiat núm.: 11.935

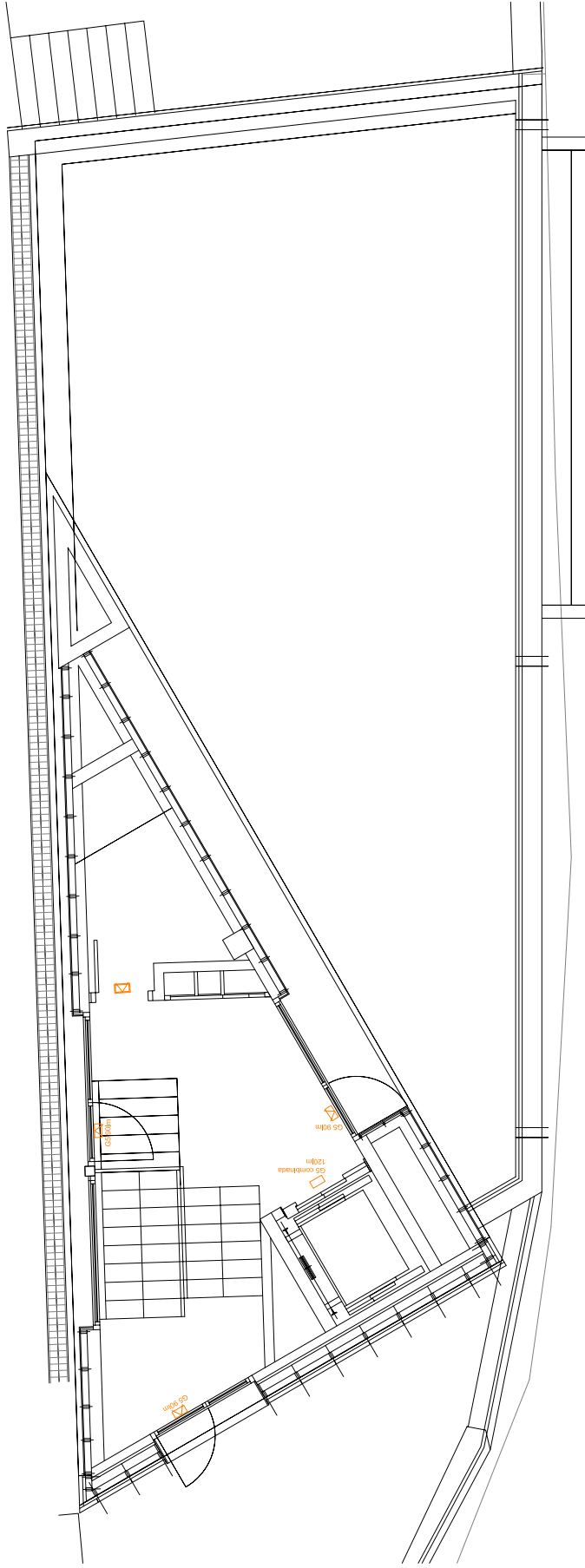
CLUSELLS & ROCA ENGINEERS, SL
17500 RIPOLL
e-mail: cluells@berna.es

PLANOJOL
P-2 Emergències
num. plànol 403


ESCALA 1/50


DATA: Abril 2011
ARXIU: 16035_05_03_10/planos/planos_2011/17




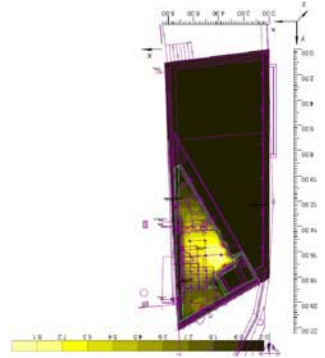


LLEGGENDA EMERGENCIES

 Luminària d'emergència fluorescent tub lineal de 90/2210 lumens, de la marca Legrand model G5 o similar de qualitat contrastada.

 Luminària d'emergència fluorescent tub lineal de 120 lumens, de la marca Legrand model G5 Combinada o similar de qualitat contrastada.

 Luminària d'emergència fluorescent tub lineal de 90 lumens, de la marca Legrand model B44, o similar de qualitat contrastada.



PROJECTE INSTAL·LACIONS

CENTRE D'INTERPRETACIÓ SERRA CAVALLERA
C/ de la Vall 8/A
17534 Parçolines

CLUSELLS & ROCA ENGINEERS, SL
C/ de la Vall 8/A
17500 RIPOLL
Tel. 972720240 Fax 972703368
e-mail: clusells@terra.es




PROJECTAT: Joel Clusells
Col·legiat núm.: 11.935

PLANOJ
PB Emergències

DATA: Abril 2011
ARXIU: www.proyectosdeemergencias.org

ESCALA
1/50

LEGENDA PROPOSTA LUMINÀRIES

Il·luminera embotzada sastre model INDI REC 1S GU10 de Mundalighting
 Llàmpada GU10 50W max.
 Mesures: Longitud/Amplada/Alçada: 101/0111 cm
 Versió acer color gris-plata ref. 112474
 Llàmpada recomanada: 50W blanc càlid ref. 575510



Il·luminera embotzada sastre model DOWNUNDER LED 27 de Mundalighting
 Llàmpada LED (incl.) 18W conjunt
 Mesures: Amplada/Alçada/Profunditat: 18/23/7,5 cm
 Caixa embotrat 18.5/23.5/9 cm
 Versió alumini IP44 color gris pedra led blanc ref. 230221



Luminària funcional model PACIFIC TOW215 de la marca PHILIPS, per a làmpades fluorescentes TL-D 1x38W (43 515 01), a prova de pols i raig d'aigua IP66



Luminària downlight pr. embotrat model KONIC de la marca LAMP, amb difusor Ø250mm per a làmpades fluorescentes TL-DE 2x28W ref.92.02.67.0



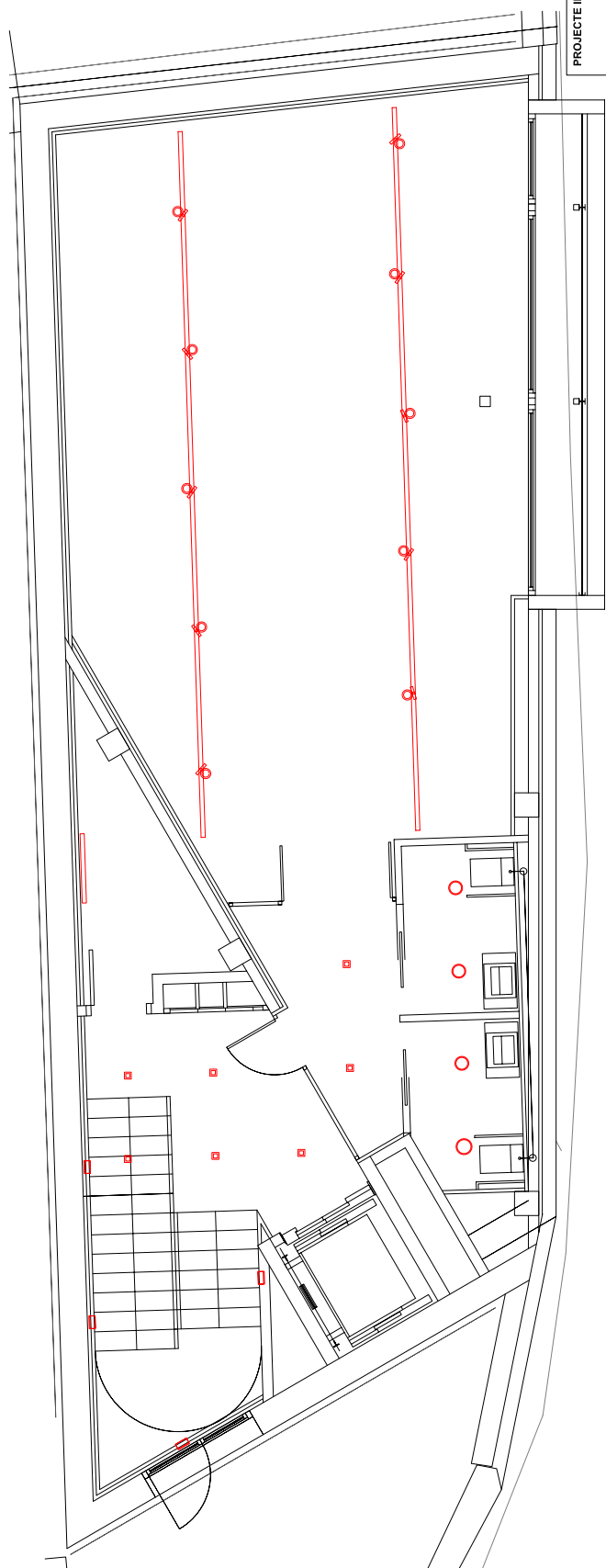
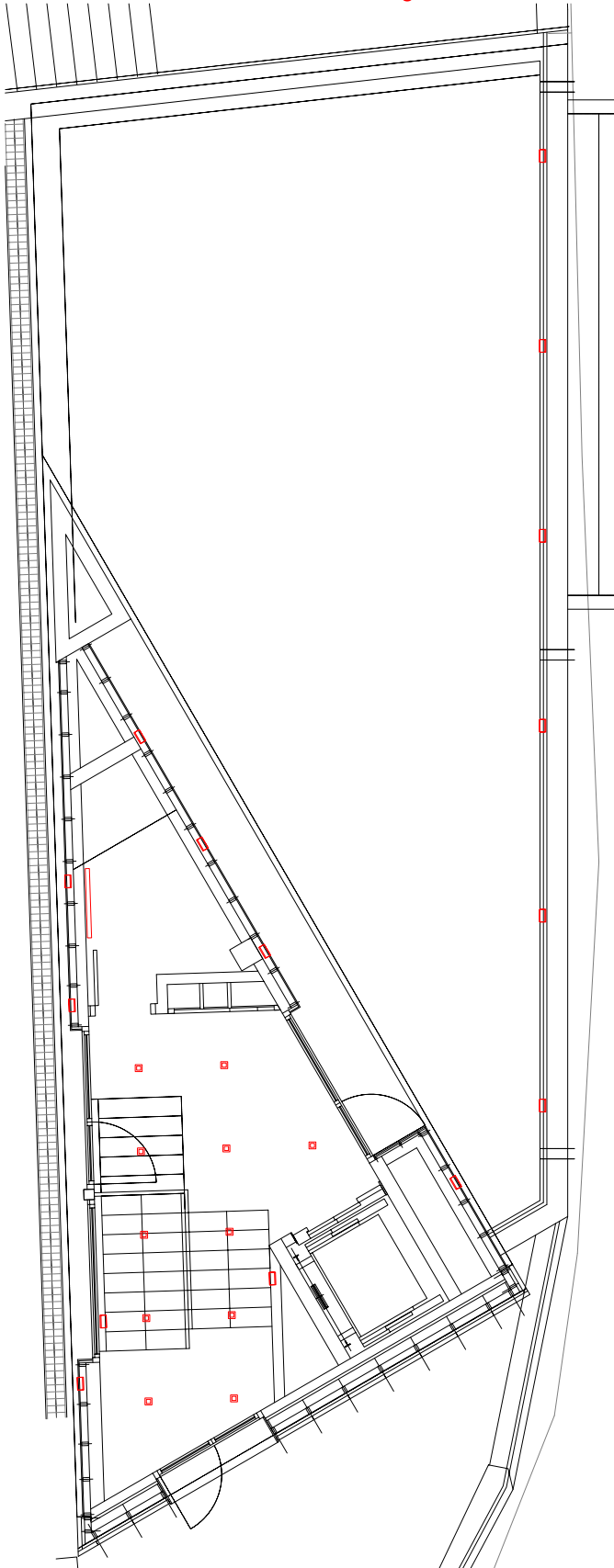
Il·luminera per carril TECI BRITESPOT ES111 GX10 de mundalighting
 Llàmpada GX10 70W max.
 Mesures: Llarg/Ampia/Alçada: 14/18/19,5 cm
 Accesoris: adaptador 3 Fases (incl.) i equip electrònic. (incl.) alumini color gris-plata ref. 453182
 Llàmpada recomanada: 70W blanc càlid ref. 506962



cael ELTRAC® CABRIL 3 FASES de Mundalighting
 Material Alumini/Plàstic
 Mesures:
 1m L/Am/AI: 100/3,6/2,2 cm.
 2m L/Am/AI: 200/3,6/2,2 cm.
 3m L/Am/AI: 300/3,6/2,2 cm.



Il·luminera embotzada terra LED SKY PLOT de mundalighting
 Llàmpada SMD LED (incl.) 1W conjunt
 Mesures: Ø/AI: 81/6 cm
 Versió alumini color gris-plata (incl.)
 Versió alumini ref. LED blanc càlid ref.227392



PROJECTE INSTAL·LACIONS

CENTRE D'INTERPRETACIÓ SERRA CAVALLERA
 C/ de la Vall 8/A
 17534 Parlet

CLUSELLS & ROCA ENGINEERS, SL
 C/ de la Vall 8/A
 17500 RIPOLL
 e-mail: clusells@terra.es



ESCALA
 1/50

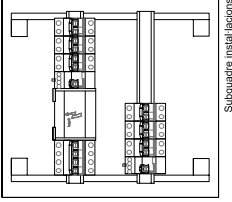
PROJECTAT: Jordi Clusells
 Col·legiat núm.: 11.935

PLANOJ
 Proposta
 il·luminació 1

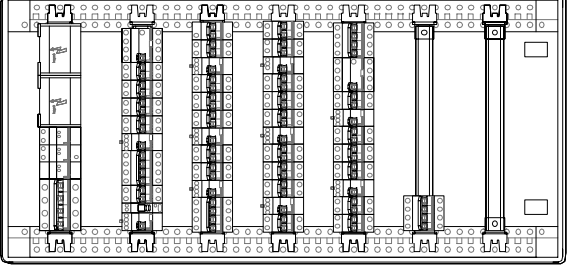
num. plànol
 101

DATA
 Abril 2011

ARXIU
servei: info@clusells.com
web: www.clusells.com



- Relació enceses planta baixa**
- e1 entrada
 - e2 escala
 - e3 ext3
 - terrat exterior
 - ext1 exterior entrada
 - c sala dipòsit
- planta soterrani -1**
- s1 i2 s2 i3 vestíbul
 - e2 escala
 - esc1 sala instal·lacions
 - if1 sala instal·lacions
 - if2 sala instal·lacions
 - ba1 sala instal·lacions
 - ba2 sala instal·lacions
 - ba3 sala instal·lacions
 - ba4 sala instal·lacions
- planta soterrani -2**
- pi pip/p3
 - pi2 pip/p3
 - pi3 pip/p3
 - ext1 sala instal·lacions
 - ext2 sala instal·lacions
 - ext3 sala instal·lacions
 - ext4 sala instal·lacions



Legenda mecanismes

- Mecanisme interruptor comandador (0x250) - sèrie Galea ref.775906 Tapa sèrie Galea per mecanisme simple color alumini ref.771310 Marc. 1 element horitzontal 91x83 color alumini ref.771301
- Mecanisme interruptor bipolar estanc IP55 de Plexo ref.091605
- Mecanisme comandador estanc IP55 de Plexo ref.091605
- Mecanisme interruptor comandador (0x250) - sèrie Galea ref.775906 Tapa sèrie Galea per mecanisme simple color alumini ref.771310 Marc. 3 element horitzontal 91x83 color alumini ref.771303
- Mecanisme toma 2P+T lateral, bombes de cargot, sèrie Galea ref.775921 Tapa Galea per toma 2P+T lateral color alumini ref.771320 Marc. 1 element horitzontal 91x83 color alumini ref.771301
- Mecanisme presa 2P+T, estancs per exterior Plexo ref.090341
- Mecanisme de detector de moviment amb sensor circular de detecció 360° a sostrre de Legrand ref.049340

- Caixa d'emportar de 4 mòduls dobles Cima marca Simon, Caixa ref. SIM450, marc ref. SIM402, emballador SIM400.
- 3 preses de xarxa
- 1 TV-S&T.

- Quadre general de comandament i protecció
- Subquadre sala calderes
- Eixugamans
- CGPM
- Caixa General Protecció i Mesura

PROJECTE INSTAL·LACIONS

CENTRE D'INTERPRETACIÓ SERRA, CAVALLERA
C/ de la Vall 5/A
17534 Parla

CLUSELLS & ROCA ENGINEERS, SL
C/ de la Vall 5/A
17500 RIPOLL
e-mail: clusells@roca.es

PROJECTAT: Joel Clusells
Col·legiat núm.: 11.935

PLANOJOL
Mecanismes 2
num. planol
202

DATA: Abril 2011
ARXIU: 0.035_03_03_11
ESCALA: 1/50

